

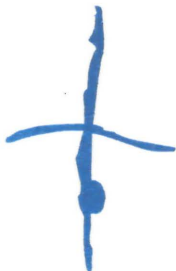
FEDERACION SALVADOREÑA DE NATACION

NATACIÓN



Ciudad Merliot, 05 de Noviembre de 2019.

CLAVADOS



Licenciada
María José Tamacas Guerra
Oficial de Información
OIR INDES.

Respetable Licenciada Tamacas, reciba un cordial saludo de parte de la
Federación Salvadoreña de Natación.

El motivo de la presente es en relación a la carta recibida en esta Federación
con fecha 24 de octubre de 2019, solicitándonos información, la cual es
detallada con sus correspondientes respuestas:

En respuesta a la consulta N° 1 y 2

- Se anexan los documentos con las medidas reglamentarias, además, se anexan los documentos del reglamento Internacional de Natación que se encuentran en la sección de Facilidades, así también los principales materiales para llevar a cabo una competencia.

POLO ACUÁTICO



Agradeciendo su atención a la presente

Cordialmente,

NADO
SINCRONIZADO



José Armando Campos
Gerente Administrativo



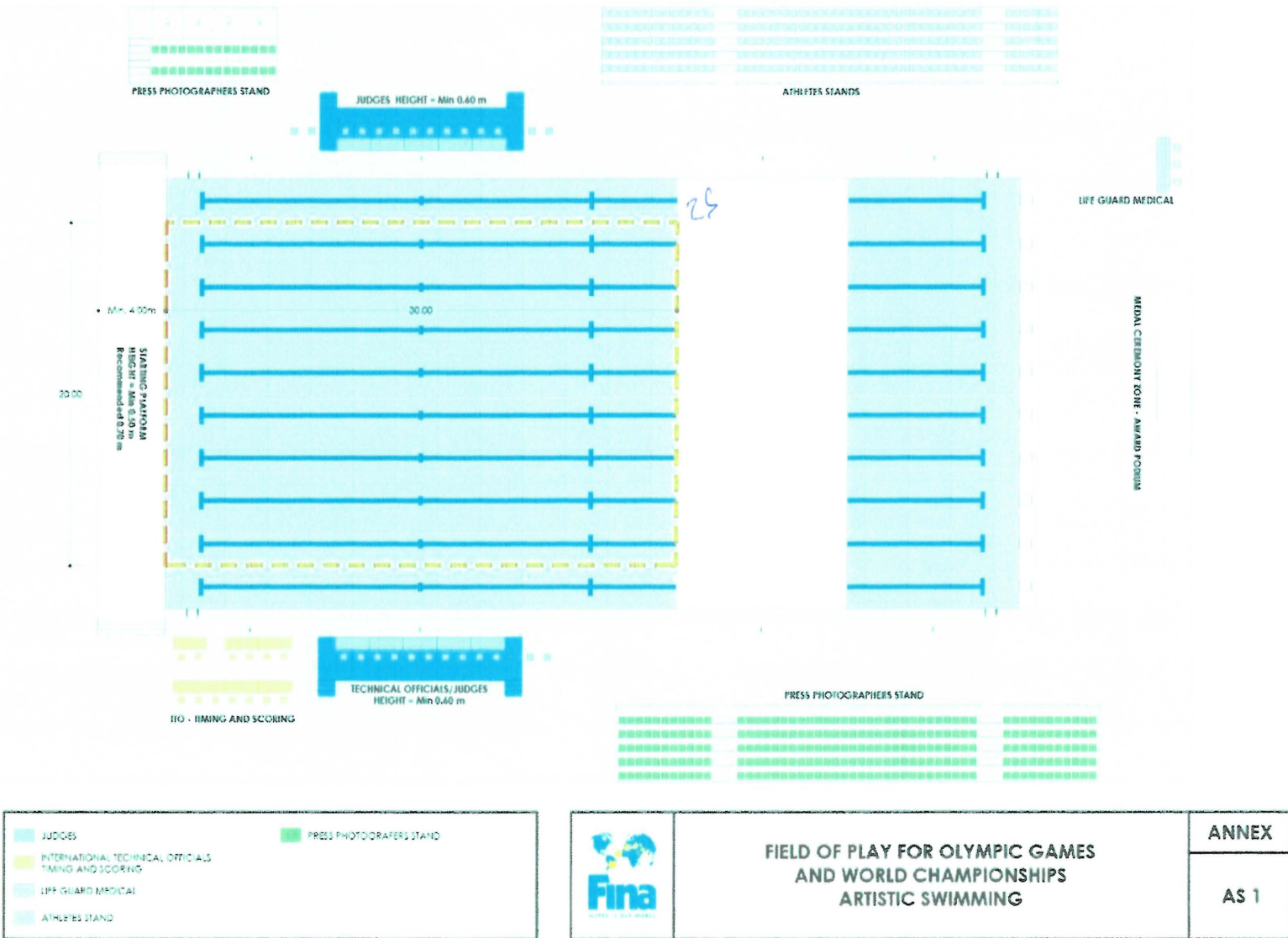
Complejo de Piscinas
V Juegos Deportivos
C. A., Final Colonia
La Sabana No. 2
Ciudad Merliot,
El Salvador.
Tel.: (503) 2289-0378
Fax: (503) 2278-8316
fedemat.fsn@gmail.com

Complejo para
Deportes Acuáticos
Ex-Polvorín
Colonia Minerva Final
Av. A y B San Jacinto
Ex-Círculo Estudiantil
Tel.: (503) 2270-0132

	RECIBIDO UAIP
Fecha:	05-11-2019
Nombre:	Betsy
Hora:	12:17 pm

Medidas Reglamentarias de Natación Artística y fosa de Clavados
25 metros de ancho x 25 de largo con una profundidad de min 2.50
(natación Artística) y máxima de 5 metros (área de clavados)





PRINCIPALES MATERIALES REQUERIDOS NATACION ARTISTICA

PROGRAMA DE RESULTADOS, CONTROLES DE PUNTAJES Y CAMARAS

Synchronized Swimming Scoring System

Download

Scoreboard

FINA World Championships							
A Free Solo							
Russian: CHIGREVA Ylva							
	21	22	23	24	25	Total	Pos.
Execution	7.5	7.5	7.5	7.5	7.5	22.500	
Artistic Imp.	7.5	7.5	7.5	7.5	7.5	28.200	Score
Difficulty	7.5	7.5	7.5	7.5	7.5	21.800	73.2000

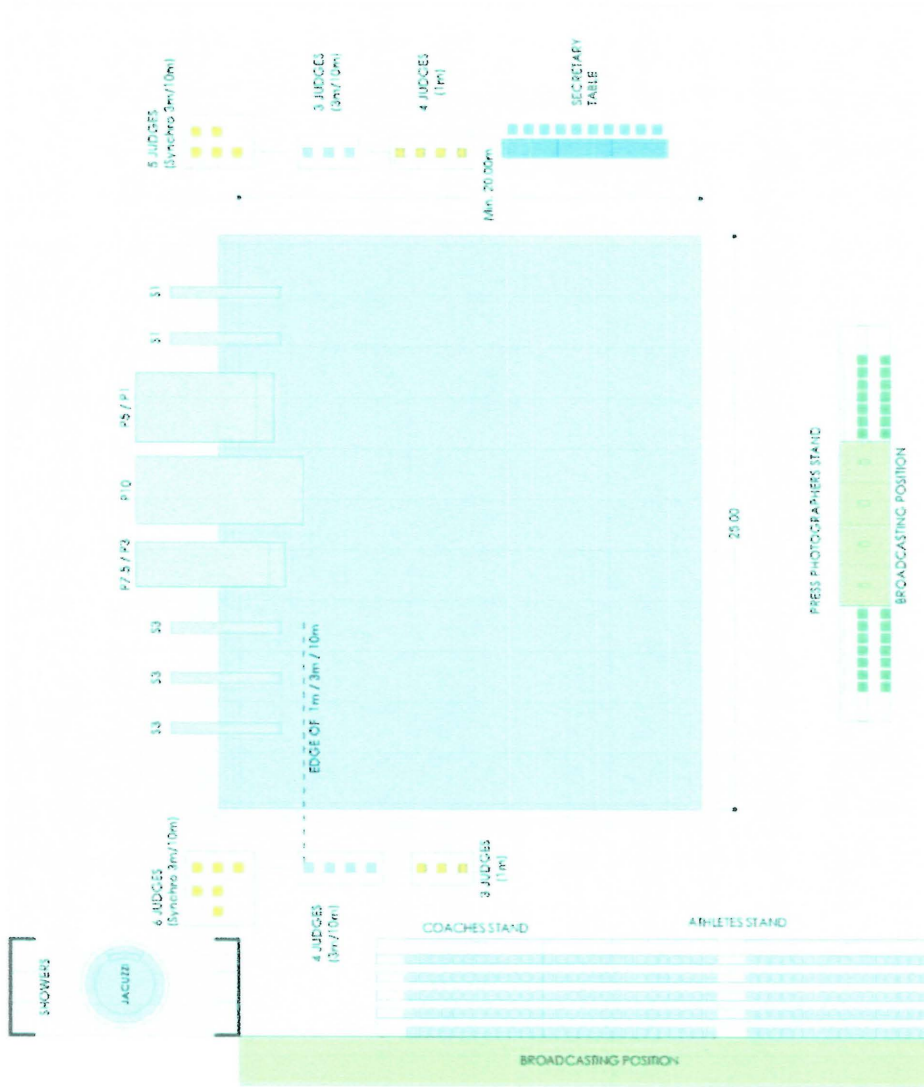
KARZO

Ultra Score Terminal

Wireless Host

X15





	ANNEX
	DV 3
FIELD OF PLAY FOR OLYMPIC GAMES AND WORLD CHAMPIONSHIPS DIVING	

P27

Plummet
P21-26

P20

A/A

F 11-19

P10

P7.5

P5

Platform under
platform

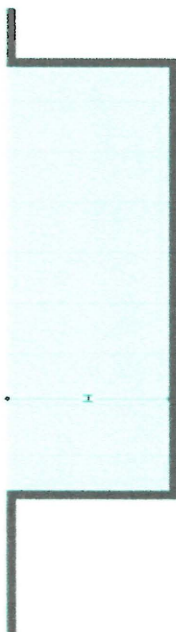
A
A

J

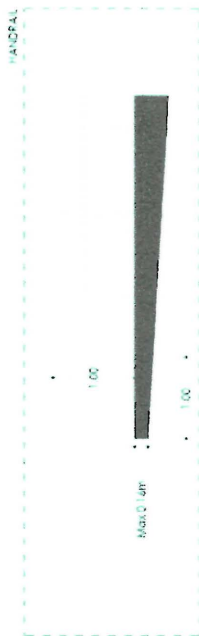
B C C C C C C C C B



CROSS SECTION



LONGITUDINAL SECTION



 HIGH DIVING DIAGRAMS	ANNEX
	HD 1

PRINCIPALES MATERIALES REQUERIDOS CLAVADOS TRANPOLINES NUEVOS Y GIMNASIO DE INTERIOR



Medidas reglamentarias oficiales para la piscina olímpica: 50 metros de largo por 25 de ancho, con profundidad mínima de 2 metros. Con numeración 0 al 9 dejando los extremos vacíos. Con un ancho de 2.50 cada carrilera.

Medidas reglamentarias oficiales para la piscina olímpica: 25 metros de largo por 21 de ancho, con profundidad mínima de 1.35 metros.

Con un ancho de 2.50 metros cada carril, con numeración del 0 al 9



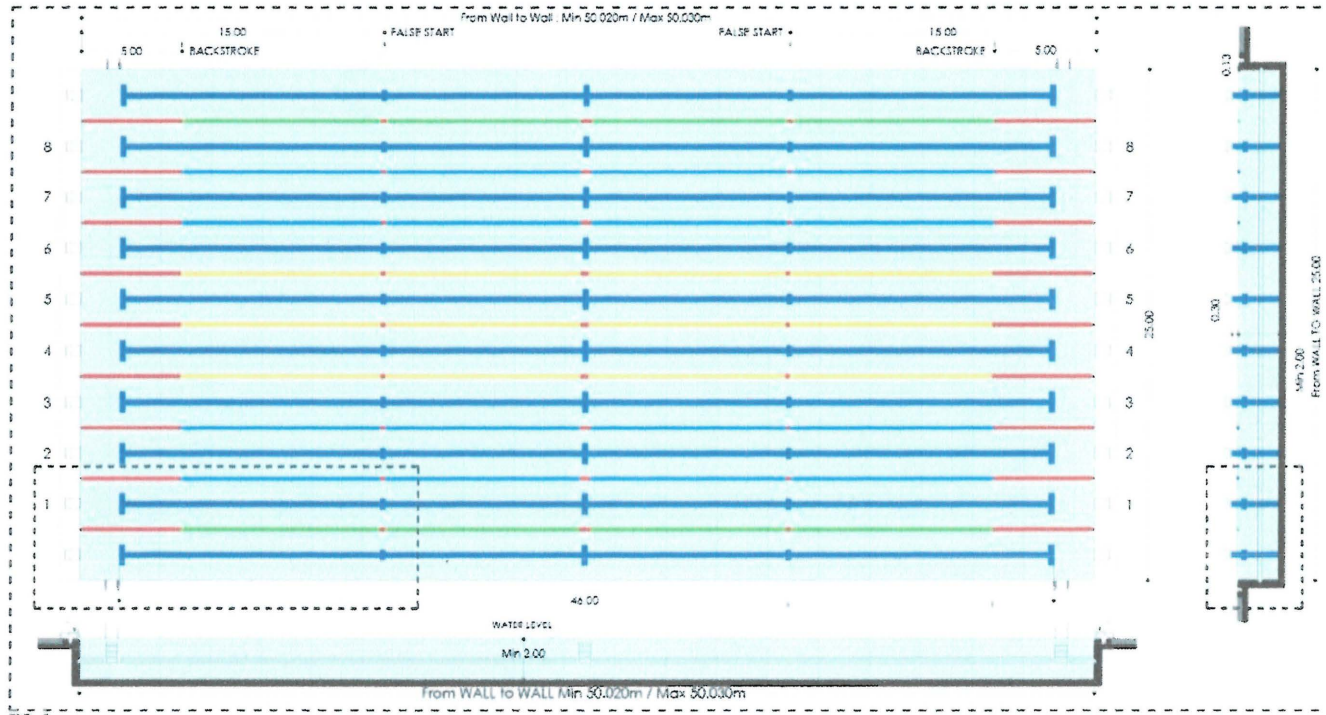


FIG. 1

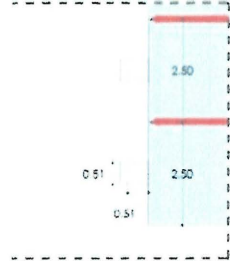


FIG. 2 STARTING PLATFORMS

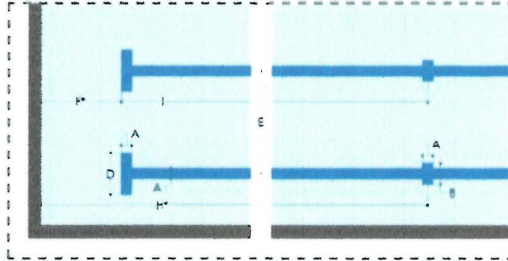


FIG. 5 PLAN LANE MARKINGS

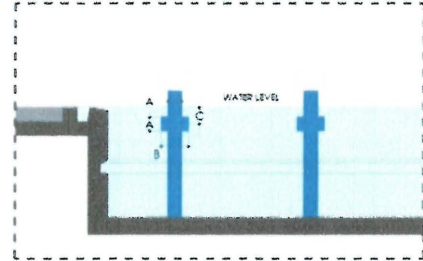


FIG. 6 END WALL LANE MARKINGS

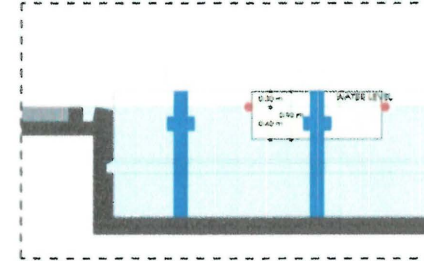


FIG. 7



FIG. 3

FR 2.14 FINA LANE MARKINGS

WIDTH OF LANE MARKINGS, END LINES, TARGETS	A	0.25m ± 0.05m
LENGTH OF END WALL TARGETS	B	0.50m
DEPTH TO CENTRE OF END WALL TARGETS	C	0.30m
LENGTH OF LANE MARKER CROSS LINE	D	1.00m
WIDTH OF RACING LANES	E	2.50m
DISTANCE FROM END OF LANE LINE TO END WALL	F*	2.00m*
TOUCH PAD	G	2.40m ± 0.50m x 0.01m
DIST. FROM CENTRE OF CROSS LINE TO END WALL	H*	15.00m*
DIST. FROM END OF LANE LINE TO CENTRE OF CROSS LINE	I	13.00m

FIG. 4 *Pool tolerance not to be considered

	50m SWIMMING POOL FOR OLYMPIC GAMES DIAGRAMS AND LANE MARKINGS	ANNEX
	SWIMMING POOL 50x25 8 LANES	SW 1

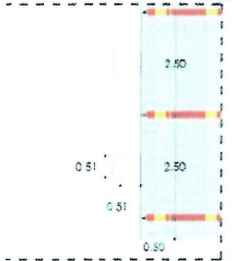
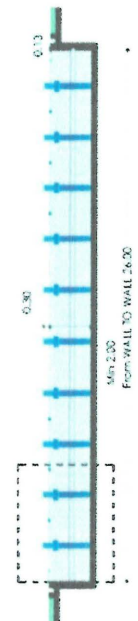
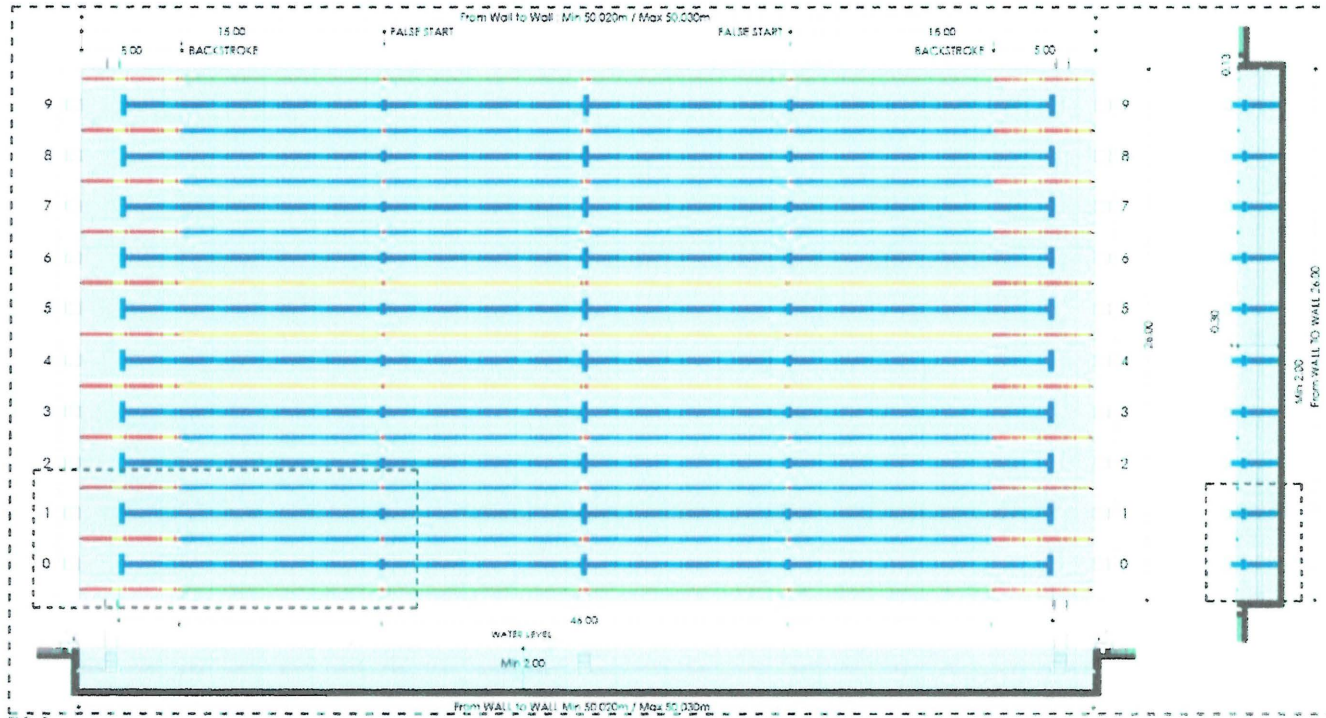


FIG. 3

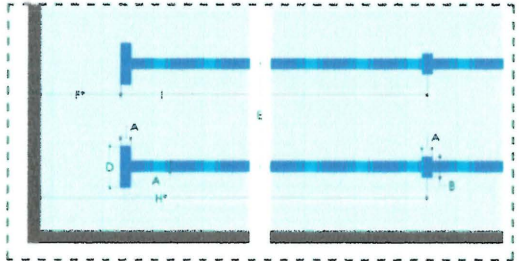


FIG. 5

FR 2.14 FINA LANE MARKINGS	
WIDTH OF LANE MARKINGS, END LINES, TARGETS	A 0.25m ± 0.02m
LENGTH OF END WALL TARGETS	B 0.50m
DEPTH TO CENTRE OF END WALL TARGETS	C 0.30m
LENGTH OF LANE MARKER CROSS LINE	D 1.00m
WIDTH OF EACH LANE	E 2.50m
DISTANCE FROM END OF LANE LINE TO END WALL	F 2.00m*
TOUCH PAD	G 7.40m x 0.90m x 0.01m
DIST. FROM CENTRE OF CROSS LINE TO END WALL	H 15.00m*
DIST. FROM END OF LANE LINE TO CENTRE OF CROSS LINE	I 13.00m

FIG. 4 *Pool tolerance not to be considered

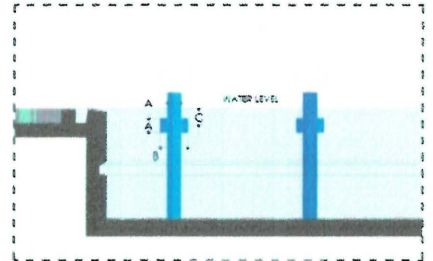


FIG. 6

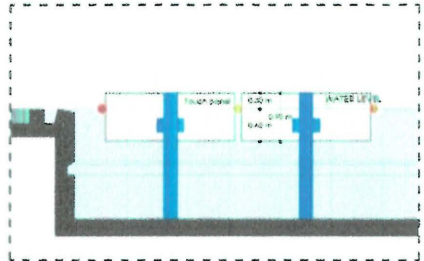


FIG. 7

	50m SWIMMING POOL FOR FINA WORLD CHAMPIONSHIPS DIAGRAMS AND LANE MARKINGS	ANNEX
	TEMPORARY SWIMMING POOL 50x26 10 LANES	SW 3

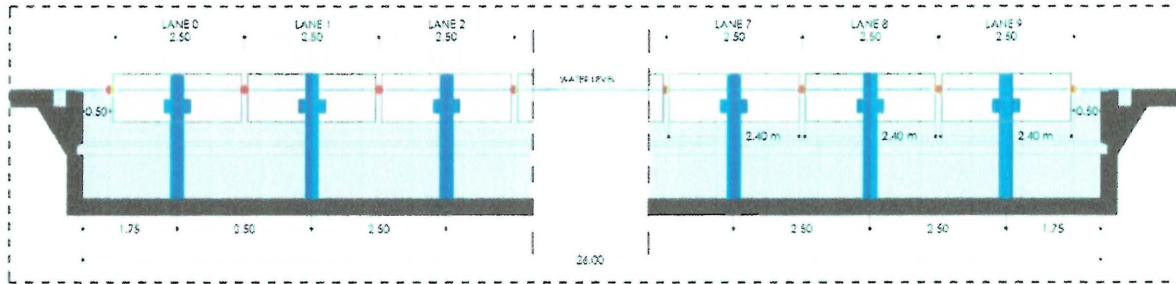


FIG. 1

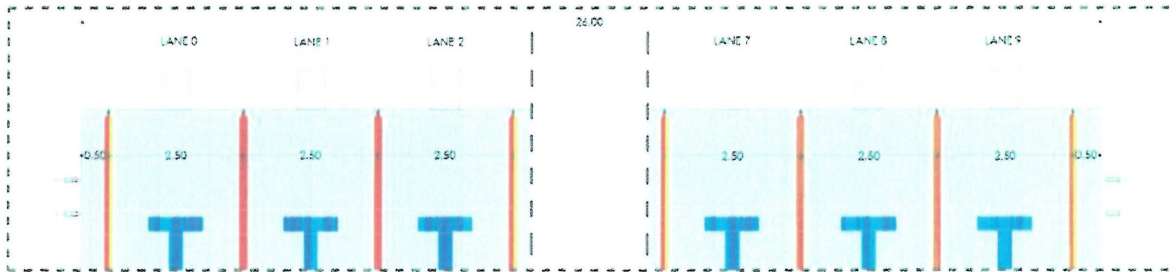


FIG. 2

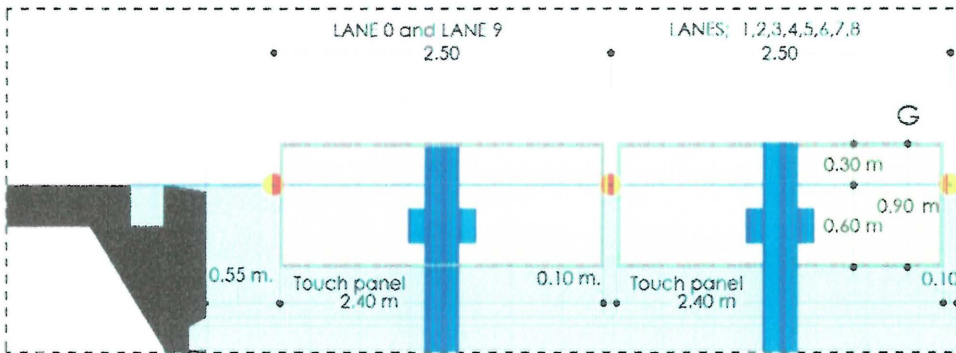


FIG. 3

	50m SWIMMING POOL FOR FINA WORLD CHAMPIONSHIPS	ANNEX
	TEMPORARY SWIMMING POOL 50x26 DIAGRAM LANES 0 and 9	SW 5

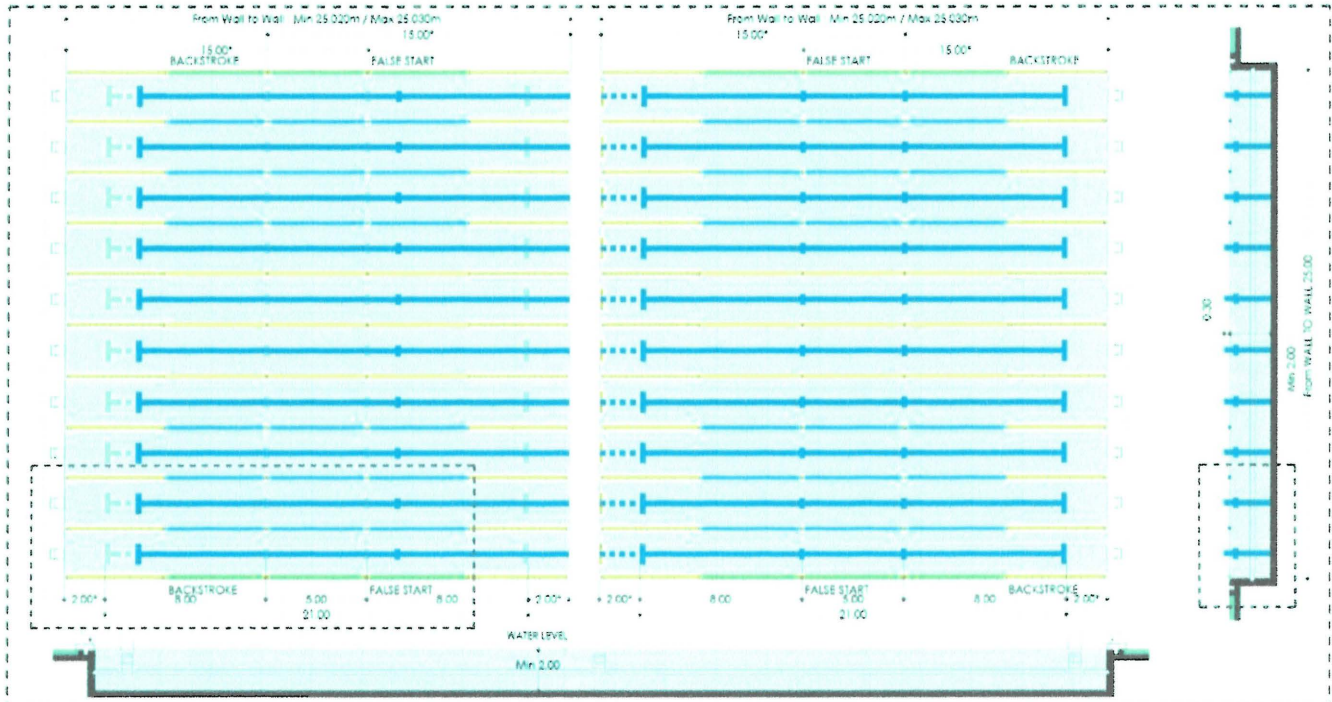


FIG. 1

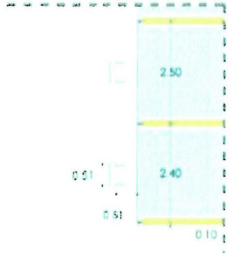


FIG. 2 STARTING PLATFORMS

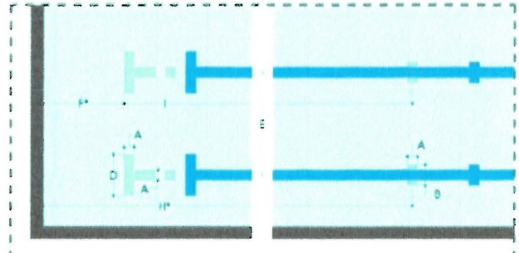


FIG. 5 PLAN LANE MARKINGS

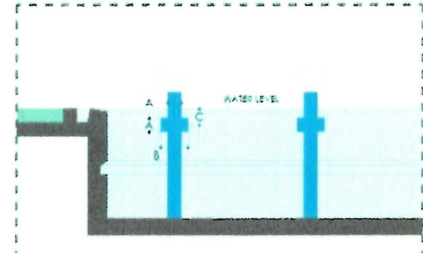


FIG. 6 END WALL LANE MARKINGS

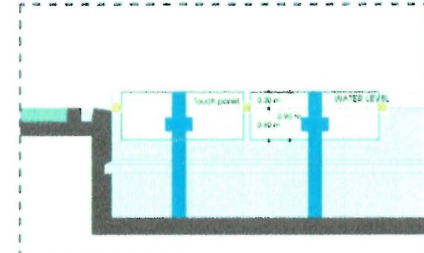


FIG. 7



FIG. 3

FIG. 2.14 FINA LANE MARKINGS

WIDTH OF LANE MARKINGS - END LINES TARGETS	A	0.25m ± 0.05m
LENGTH OF END WALL TARGETS	B	0.50m
DEPTH TO CENTRE OF END WALL TARGETS	C	0.30m
LENGTH OF LANE MARKER CROSS LINE	D	1.00m
WIDTH OF RACING LANES	E	2.50m
DISTANCE FROM END OF LANE LINE TO END WALL	F*	2.00m†
TOUCH PAD	O	0.40m x 0.90m x 0.01m
DIST. FROM CENTRE OF CROSS LINE TO END WALL	H*	15.00m†
DIST. FROM END OF LANE LINE TO CENTRE OF CROSS LINE	I	13.00m†

FIG. 4 *Pool tolerance not to be considered



50m SWIMMING POOL WITH ONE BULKHEAD
DIAGRAMS AND LANE MARKINGS
 25m SWIMMING COMPETITIONS - BULKHEAD IN CENTRAL POSITION

ANNEX
 SW 9

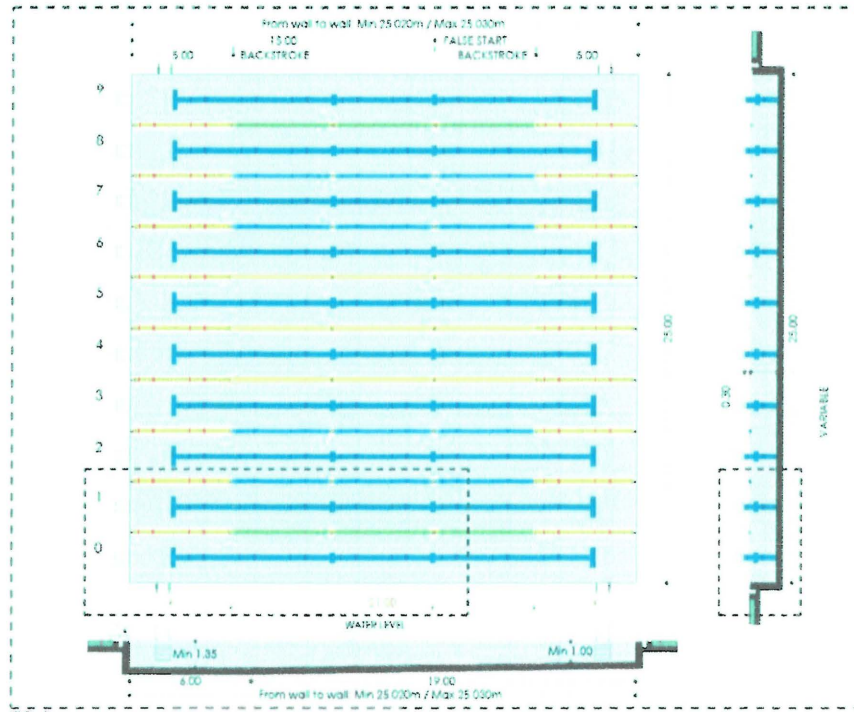


FIG. 1

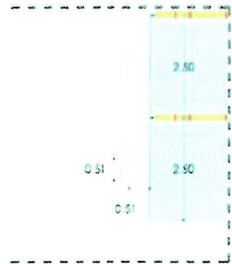


FIG. 2 STARTING PLATFORMS

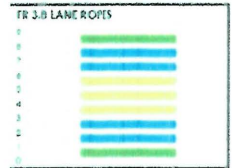


FIG. 3

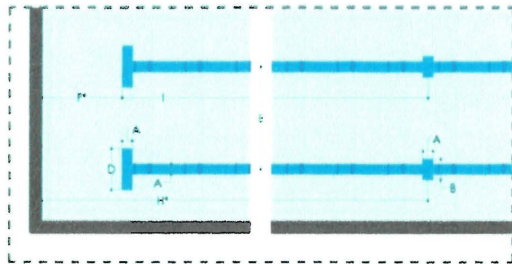


FIG. 5 PLAN LANE MARKINGS

FR 2.14 FINA LANE MARKINGS	
WIDTH OF LANE MARKINGS - END LINES TARGETS	A 0.25m x 0.05m
LENGTH OF END WALL TARGETS	B 0.50m
DEPTH TO CENTRE OF END WALL TARGETS	C 0.30m
LENGTH OF LANE MARKER CROSS LINE	D 1.00m
WIDTH OF RACING LANES	E 2.50m
DISTANCE FROM END OF LANE LINE TO END WALL TOUCH PAD	H* 2.00m*
DIST. FROM CENTRE OF CROSS LINE TO END WALL	H 2.40m x 0.90m x 0.01m
DIST. FROM END OF LANE LINE TO CENTRE OF CROSS LINE	H* 13.00m

FIG. 4

*Pool tolerance has to be considered

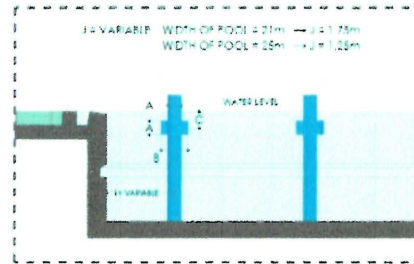


FIG. 6 END WALL LANE MARKINGS

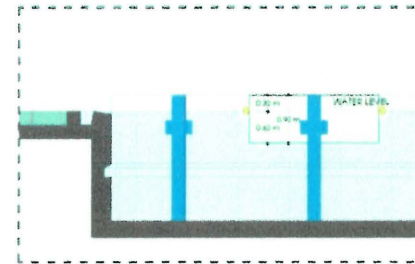
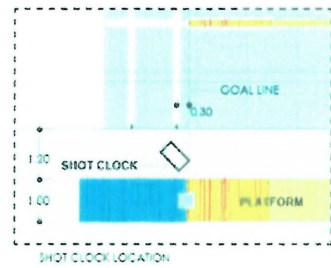
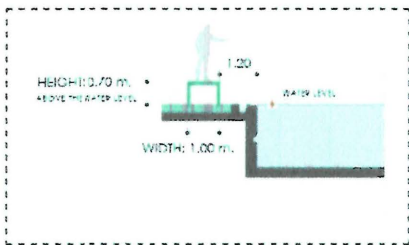
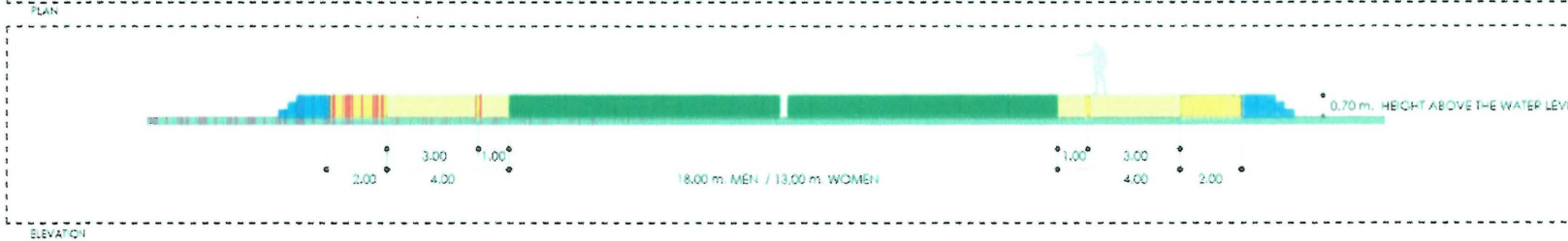
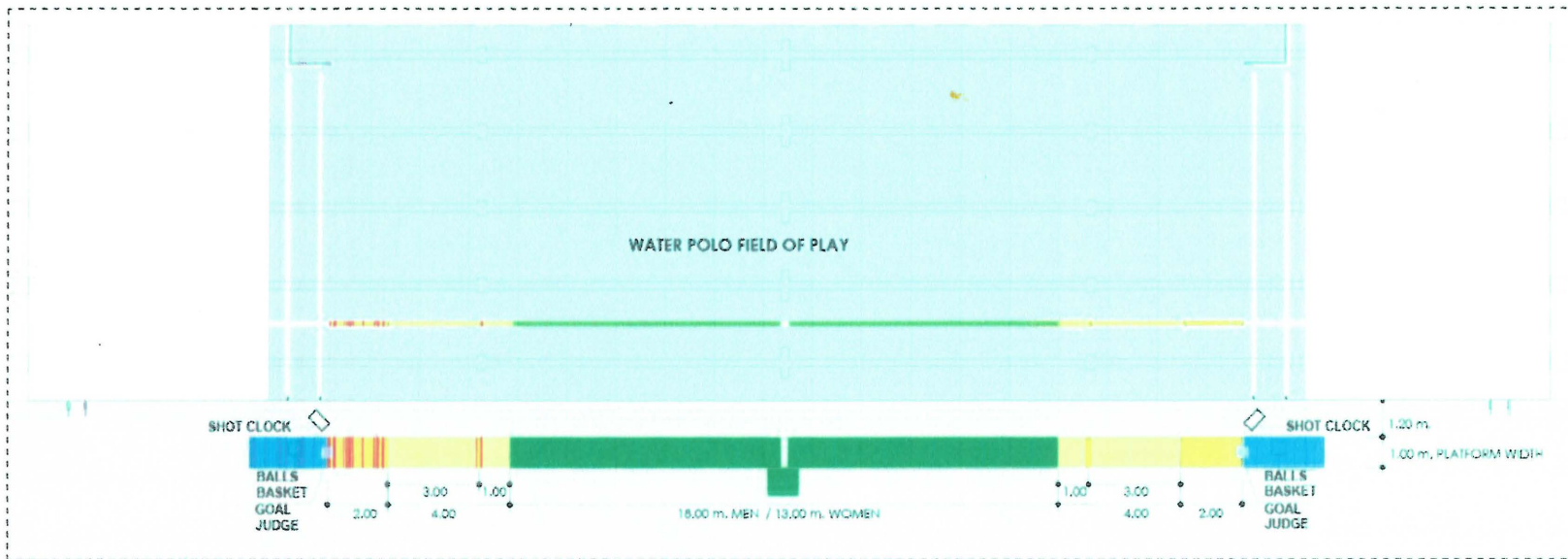


FIG. 7

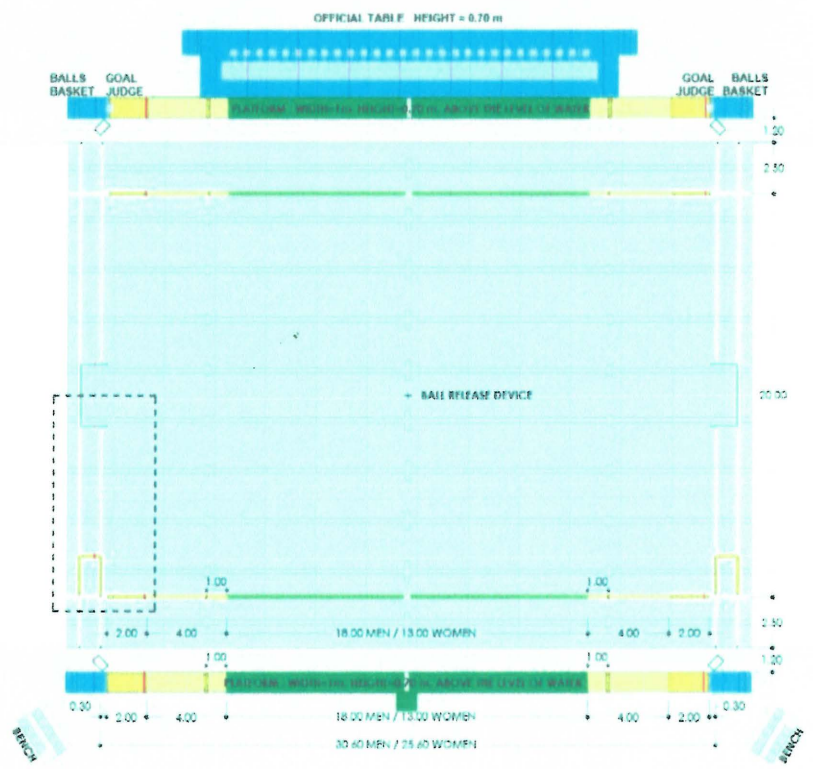
	25m SWIMMING POOL DIAGRAMS AND LANE MARKINGS	ANNEX
	PERMANENT SWIMMING POOL 25x25 8 LANES	SW 7

Medidas reglamentarias de Polo Acuático:
terreno de Juego 30 metros de largo x 20 de ancho para hombres.
Para mujeres 25 de largo por 20 de ancho





	PLATFORMS FOR OLYMPIC GAMES AND WORLD CHAMPIONSHIPS WATER POLO	ANNEX
		WP 2



EXCLUDED PLAYERS RE-ENTRY AREA



DEPTH OF WATER
NOT LESS THAN 2m



FIELD OF PLAY FOR OLYMPIC GAMES AND
WORLD CHAMPIONSHIPS
WATER POLO

ANNEX
WP 1

Polo Acuático

PRINCIPALES MATERIALES REQUERIDOS CLAVADOS CONSOLA GEN 6, GORROS, PORTERIAS, RELOJES, BALONES

